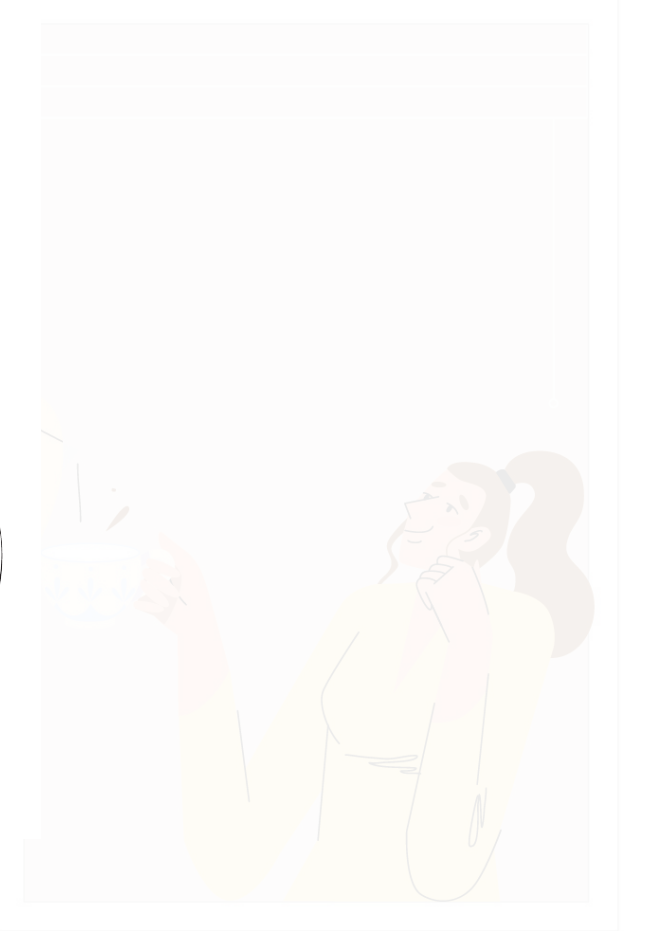
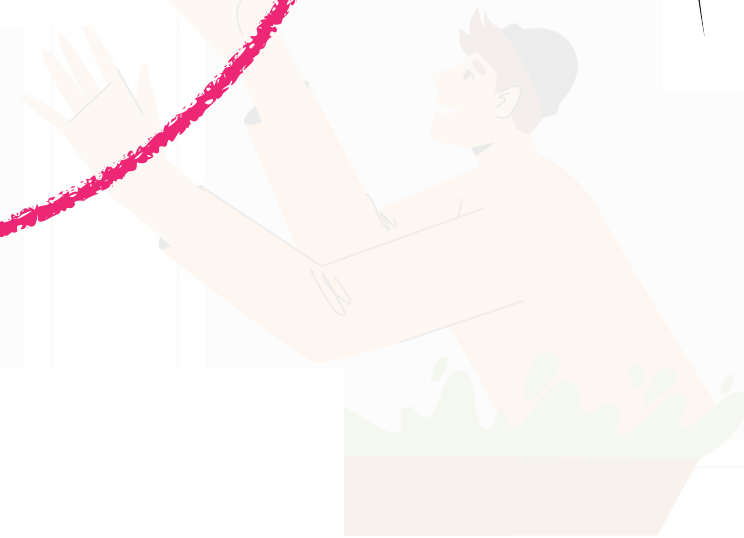
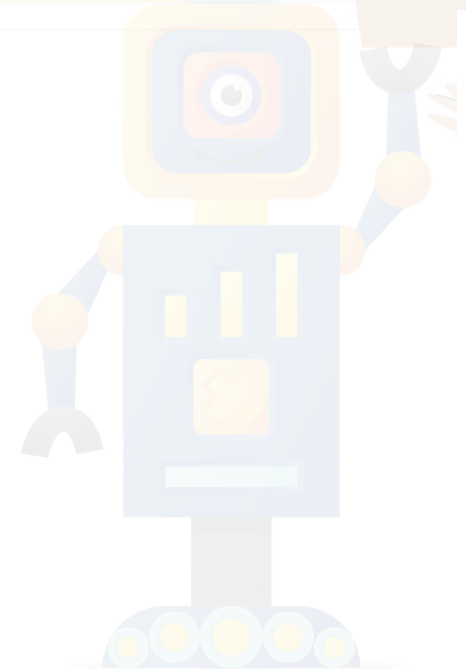
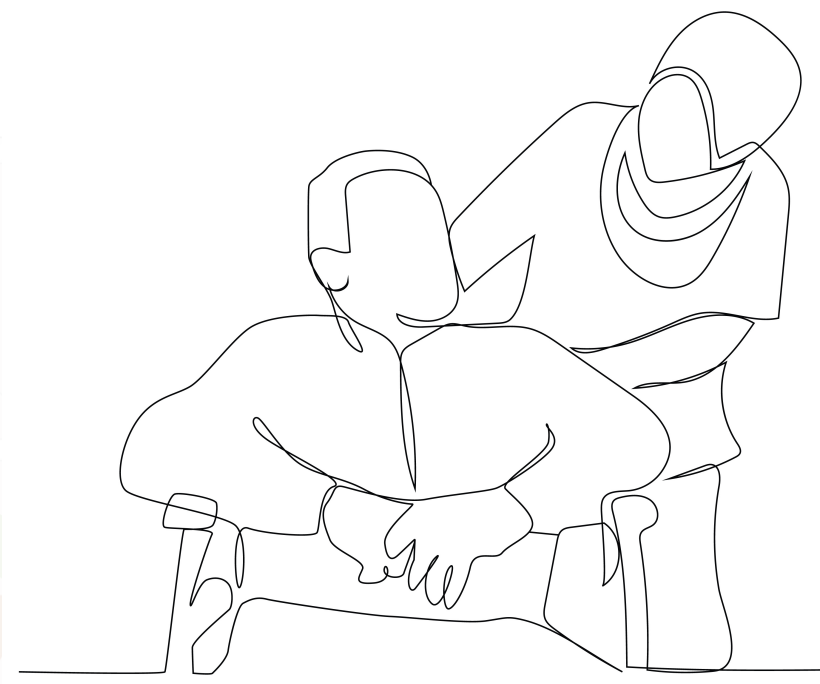
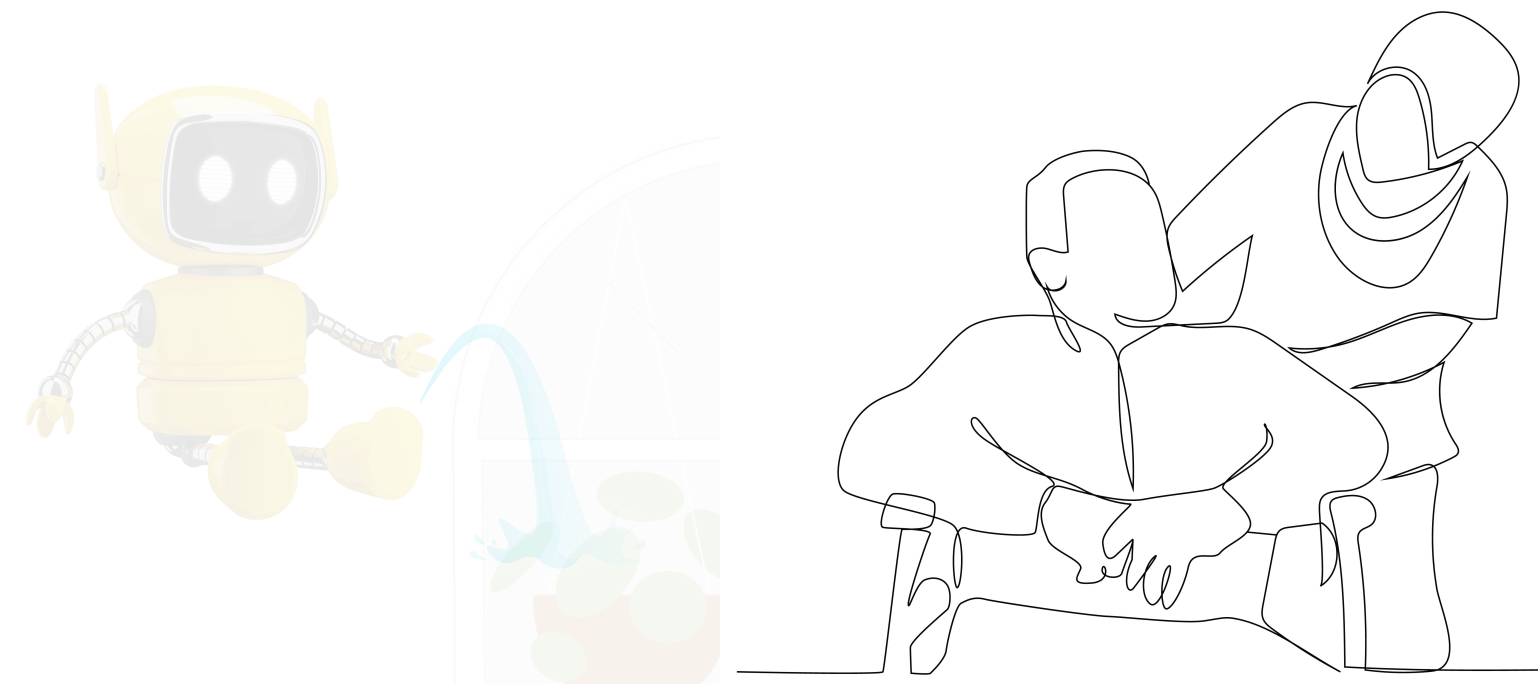


Social Audits of AI **Towards Participatory Impact Evaluations** **of AI-Based Systems**

Neha Kumar (Associate Professor, IC)

Aman Khullar (PhD Student, CS)

AI in Health





Noora Health



Georgia Tech

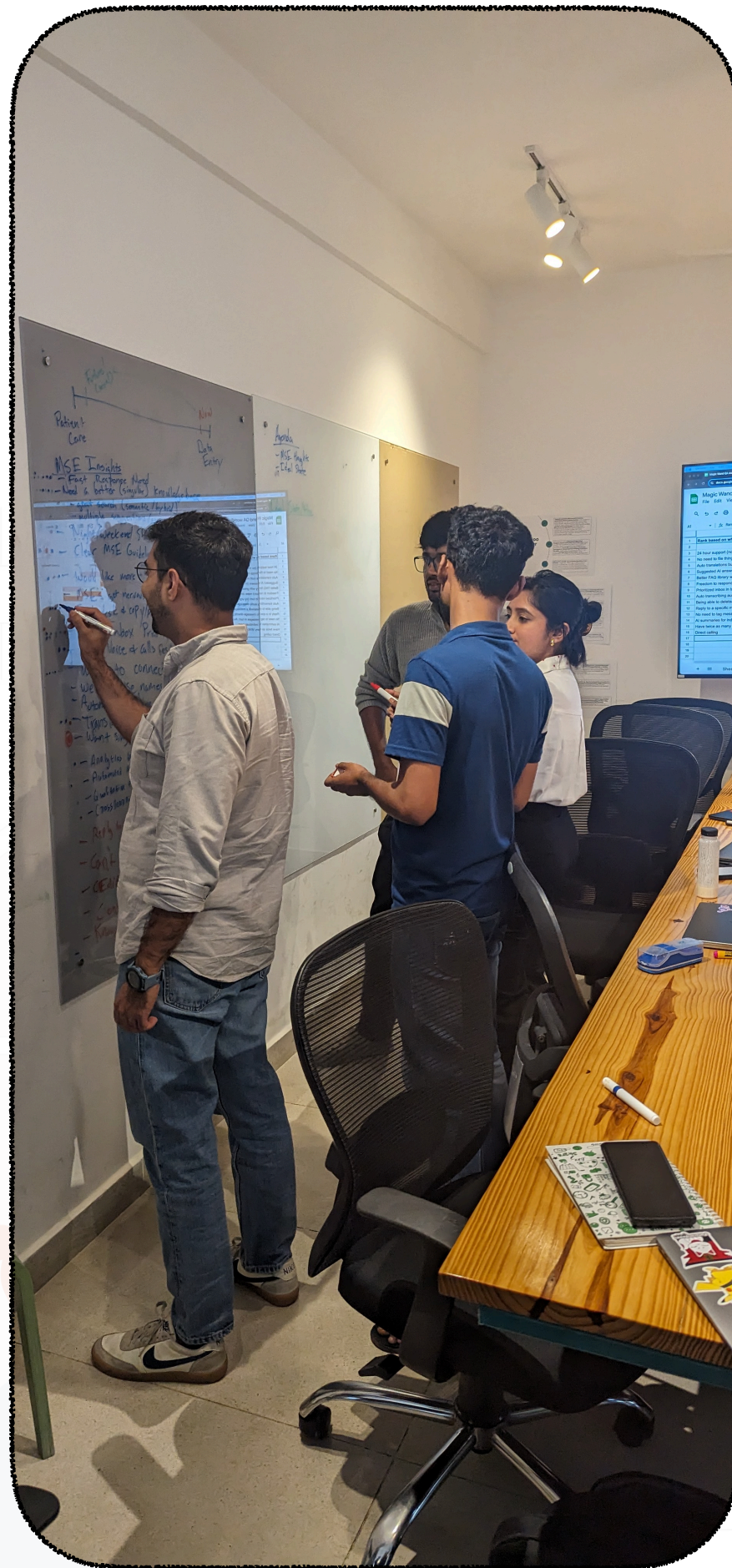


Design-Based
Implementation Research



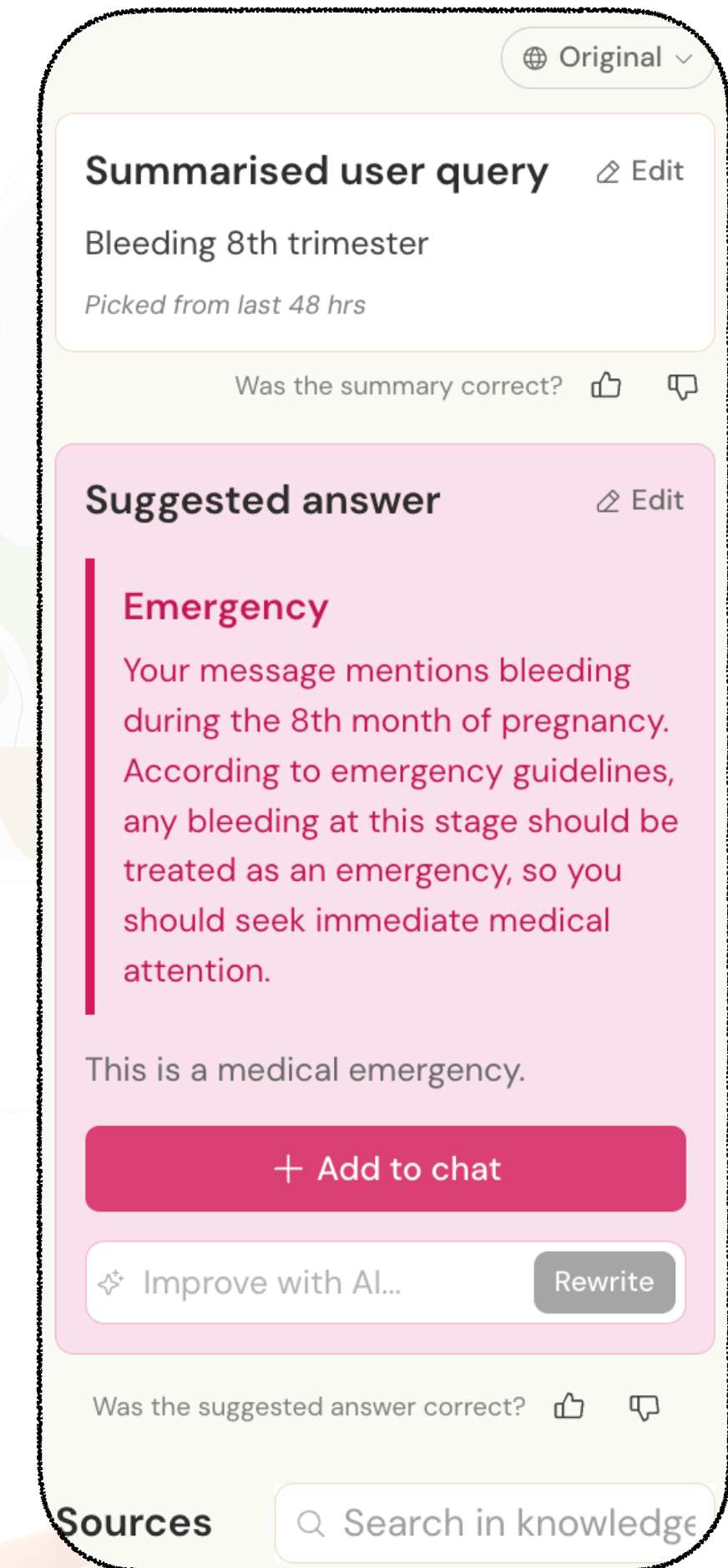
Expanding Human
Capabilities through AI

Khullar, A., Nalin, N., Prasad, A., Mampilli, A. J., & Kumar, N. (2025, April). Nurturing Capabilities: Unpacking the Gap in Human-Centered Evaluations of AI-Based Systems. In Proceedings of the 2025 CHI Conference on Human Factors in Computing Systems (pp. 1-18).



Human-AI

Agency Handoff
& Reclaim



Evaluation Science for GenAI

A circular wreath composed of various black-and-white line art icons representing sustainability and environmental themes. The icons include a smiling Earth with flowers, a house with solar panels, a car, a person recycling, a wind turbine, a person planting a tree, a person holding a recycling bin, a person on a bicycle, a solar panel, a rabbit, a tree, a person holding a recycling bin, a person planting a tree, a person holding a recycling bin, a person on a bicycle, a car, a person recycling, a house with solar panels, a smiling Earth with flowers, and a person holding a recycling bin.

Metrics

A circular wreath composed of various black-and-white line art icons representing sustainability and environmental themes. The icons include a smiling Earth with flowers, a house with solar panels, a car, a person recycling, a wind turbine, a person planting a tree, a person holding a recycling bin, a person on a bicycle, a solar panel, a rabbit, a tree, a person holding a recycling bin, a person planting a tree, a person holding a recycling bin, a person on a bicycle, a car, a person recycling, a house with solar panels, a smiling Earth with flowers, and a person holding a recycling bin.

Institutions

A circular wreath composed of various black-and-white line art icons representing sustainability and environmental themes. The icons include a smiling Earth with flowers, a house with solar panels, a car, a person recycling, a wind turbine, a person planting a tree, a person holding a recycling bin, a person on a bicycle, a solar panel, a rabbit, a tree, a person holding a recycling bin, a person planting a tree, a person holding a recycling bin, a person on a bicycle, a car, a person recycling, a house with solar panels, a smiling Earth with flowers, and a person holding a recycling bin.

Methods

A background illustration featuring several stylized, semi-transparent figures of people in various poses, suggesting a collaborative meeting or community gathering. The figures are rendered in soft, pastel colors like pink, blue, and green, and are overlaid on a light, textured background. The overall style is modern and inclusive, emphasizing community and collaboration.

How might we conduct community-led impact evaluations of AI-based systems?

“Social audits create a space for ordinary citizens to be able to participate in everyday governance by providing information, facilitating claim-making and creating a platform to be heard and seek accountability.” [Social Audit Resource Hub]

Information
Gathering

Record
Verification

Claim
Facilitation

Resolution
and Action

Public
Hearing

The background is a light-colored illustration of a modern living room. In the center, a man in a blue hoodie is leaning over a grey cat. To his left, a woman in a pink shirt is sitting on the floor, looking at a book. To his right, a woman in a green shirt is sitting on the floor, looking at a laptop. In the foreground, a woman in a yellow shirt is sitting on the floor, looking at a book. In the background, a man in a red shirt is sitting on the floor, looking at a book. A small yellow robot is standing on the floor near the man in the blue hoodie. A larger blue robot is standing on the floor near the woman in the pink shirt. A small orange robot is standing on the floor near the woman in the green shirt. A small white robot is standing on the floor near the woman in the yellow shirt. A small white robot is standing on the floor near the man in the red shirt. The room has large windows and a potted plant.

Thematic Discourse
Analysis

Log Data Analysis

Methods

Algorithmic Evaluation

Semi-Structured
Interviews

Participatory
Impact Evaluation
Framework

Dissemination
of Findings CHI/
CSCW 2027

Feb 2026

Jul 2026

Sep 2026

Pilot with
Noora Health

